

A woman with dark hair in braids, wearing large dark sunglasses, a thin necklace, and a wide bracelet, stands on a cobblestone path. She is wearing a long, flowing dress with a large-scale floral pattern in shades of green, yellow, and white. She holds a round, textured straw bag in her right hand. The background shows a white building with large windows and a potted plant.

LOOKBOOK

CAMPAIGN SPRING SUMMER

2024

Oscalito

1936

MADE WITH LOVE IN TORINO

With the SS 2024 collection, the tripartition of the Oscalito 1936 collection continues into three lines (ICONIC; TERRA; TIMELESS) which offer a very different style, image, materials, and modeling, keeping as common denominator the quality and attention to detail that distinguish our brand.

The traditional **ICONIC** line, which represents the historical DNA of the brand, uses an elegant leavers lace flounce, the inevitable Chantilly lace band and an embroidered tulle entre-deux with geometric design, all combined with ribbed filoscozia, micromodal jersey, cotton poplin and stretch viscose satin. Prints bring novelty and originality to the ICONIC line of this year. The first one, extremely sophisticated, in a stretch viscose fabric, is characterized by a floral ramage dégradé with warm and bright tones, such as beige, orange and peach.

The second one, with more summery notes, offers a palette of blue shades that recall marine hues, declined on shirts, sleeveless top and chemise in viscose linen hand with soft and wide volumes.

The new **TERRA** line offers garments from the most essential and minimal style that grant softer and more comfortable fits: leisure set and top in ribbed cotton fabric with neutral colours, polo-shirt models in cotton wider rib, plain or with contrasting edges, as well as mise in cotton poplin embellished with macramé band with OSCALITO logo. Linen, plain or printed, certainly plays a characterizing role in the Terra line of this year and is declined on models with simple and wide lines that increase the freshness and versatility of this fabric.

The print, an all over foliage with shades ranging from beige to green, resumes the colors of the monochromatic linen colours and evokes an exotic and natural imagination.

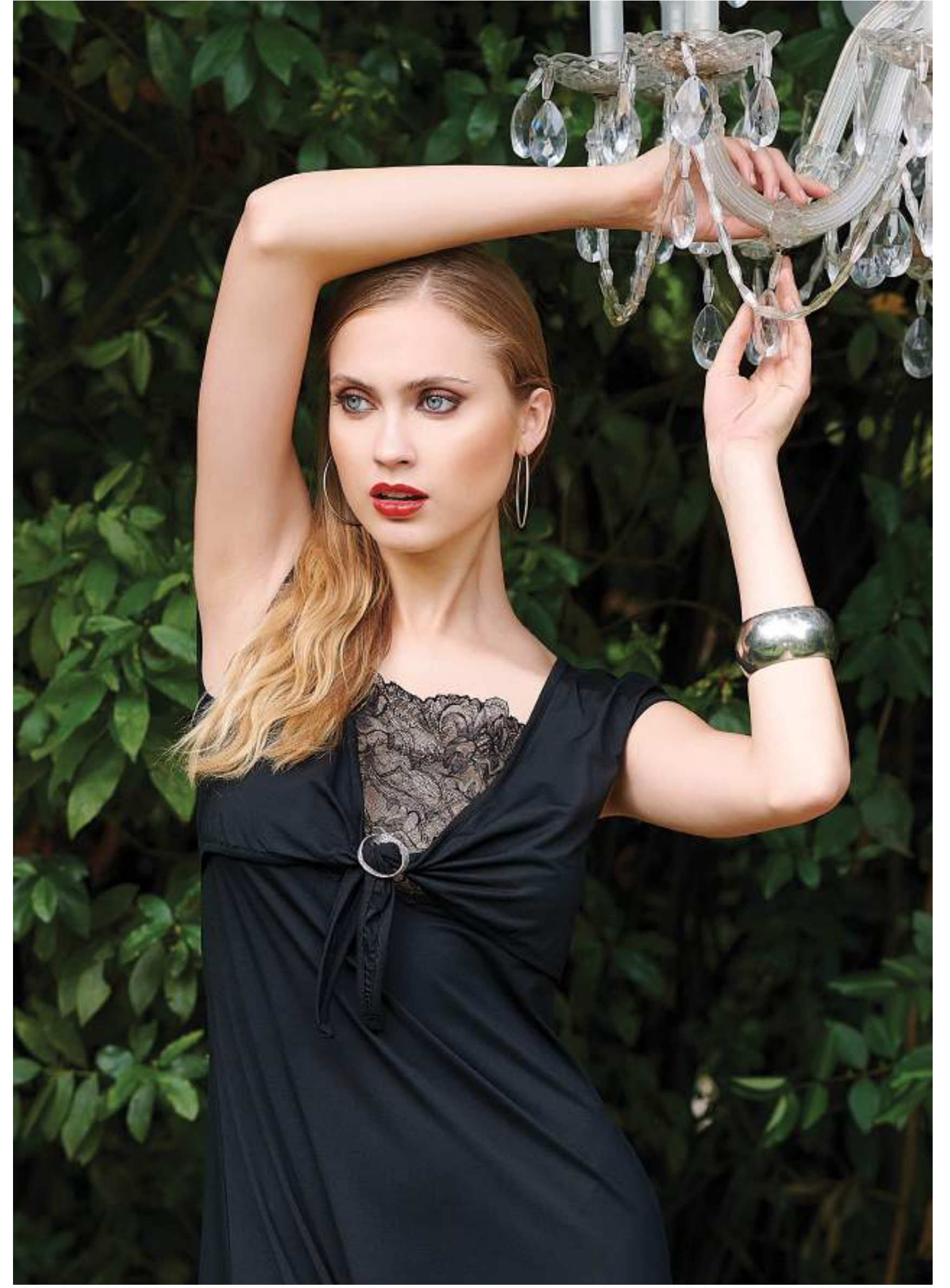
The line is completed by cotton jersey jerseys, solid-colored or enriched with details in foliage print.

The **TIMELESS** line includes the classic Oscalito bestsellers, such as the Egyptian Makò cotton Filoscozia rib with tone on tone and contrasting leavers band, with classic collar, with silk satin edges and with the new seasonal bands in macramé and in stretch mesh. The evergreens of this line are the series in micromodal in 7 colors with intimate garments embellished with an elastic lace, the stretch silk and pure silk organzine with satin profiles, organzine edges and leavers lace flounce available in 8 colors. The whole is completed by a nightwear capsule with simple and soft lines declined on cotton jersey set and chemise and items in the precious "operatino" in filoscozia characterized by its particular see-through effect.

Oscalito
1936



ICONIC
COLLECTION





















TIMELESS
COLLECTION



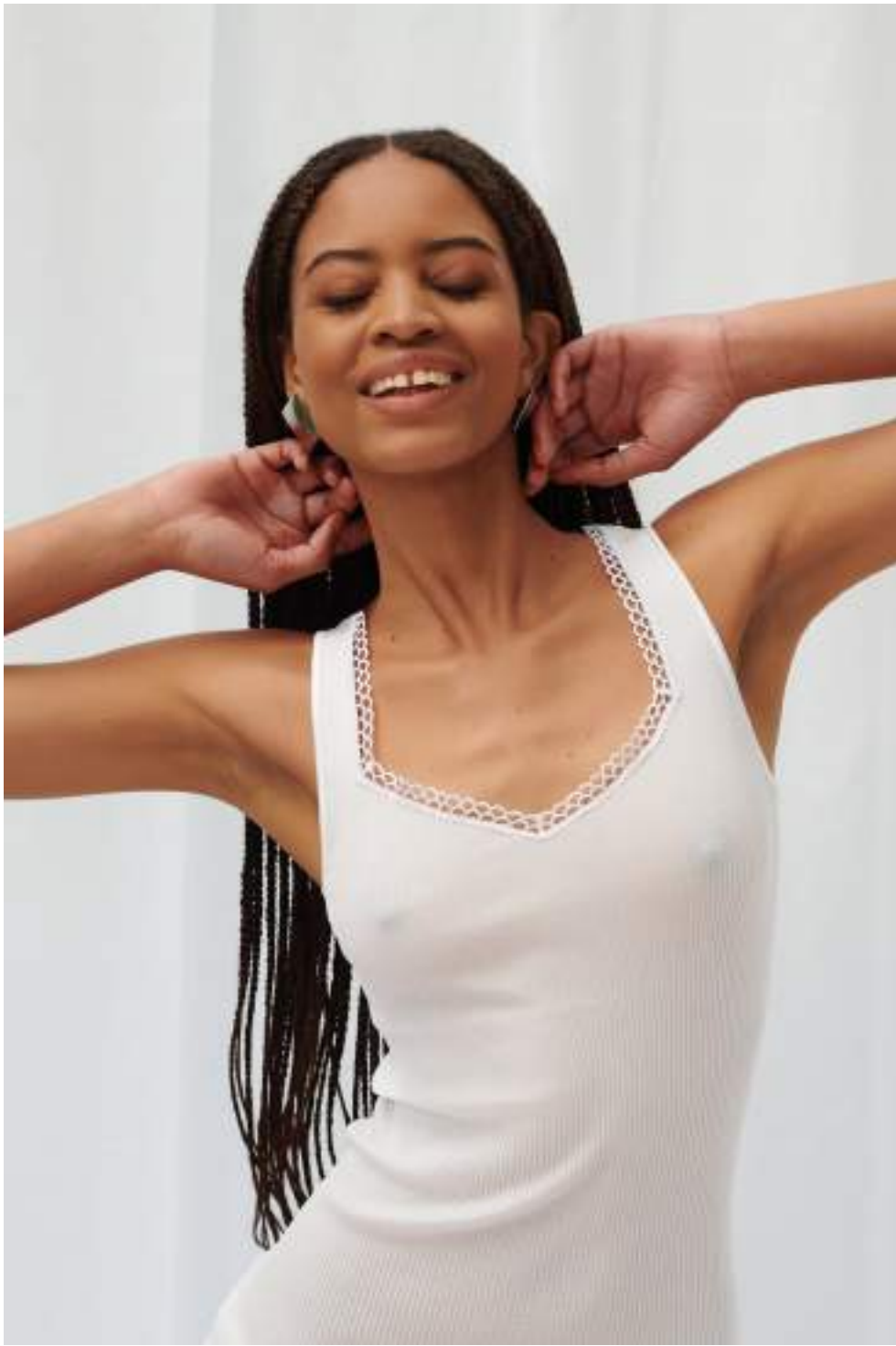
















TERRA
COLLECTION















LOOKBOOK

CAMPAIGN SPRING SUMMER

2024

MADE IN TORINO

Oscalito



MAGLIFICIO PO SRL CON SOCIO UNICO

Via Asiago 59/8 10142 Torino - Italy

C.C.I.A.A. 307701 Trib. di Torino n. 294/60
C. MECC. TO 050749 CEE ID. IT 00458300019
Cod. Fisc. and VAT Number 00458300019

www.oscalito.it



LOOKBOOK

CAMPAIGN SPRING SUMMER

2024

Oscalito
1936